



ITEM POOL SECURITY:

WHAT OPTIONS ARE AVAILABLE

Andrew Wiley
Alpine Testing Solutions

Jack Gerrow
National Dental Examining Board of Canada

National Dental Examining Board of Canada

- ▲ Established by an Act of Parliament in 1952.
- ▲ Establish the qualifying conditions for a national standard of competence for general dentists.
- ▲ Issue certificates to dentists who successfully meet this standard
- ▲ Two components to the overall certification process
 - Written Examination
 - Objectively Structured Clinical Examination

National Dental Examining Board of Canada

Written Examination

- Paper and pencil
- Examination is administered three times a year
- 2 to 4 scrambled forms used during each administration
- Item is divided into two sections, 150 items in each
- All items are MCQ
- Passing standard was set in 2008; implemented in 2009, with exams equated back through anchor items

National Dental Examining Board of Canada

Written Examination

- Basic science knowledge
- Applied clinical science knowledge
- Diagnosis
- Treatment planning
- Prognosis
- Treatment methods
- Clinical decisions

Item Release Policy

- ▲ Reports that some candidates were attempting to reconstruct the exam.
- ▲ Item release policy was adopted in 2009.
- ▲ Released approximately 7,000 items (stimulus, stem, response options, but not the key).
 - English and French-Canadian versions

Research Question & Design

- ▲ Qualitative elements
 - Focus groups of stakeholders
 - Multiple factors (e.g., curriculum, perception)
- ▲ Quantitative elements (Phase 1)
 - Stability of form characteristics
 - Item level drift
- ▲ Quantitative elements (Phase 2, int'l candidates)
 - Stability of form characteristics
 - Item level drift

Quantitative Analysis–Phase 1

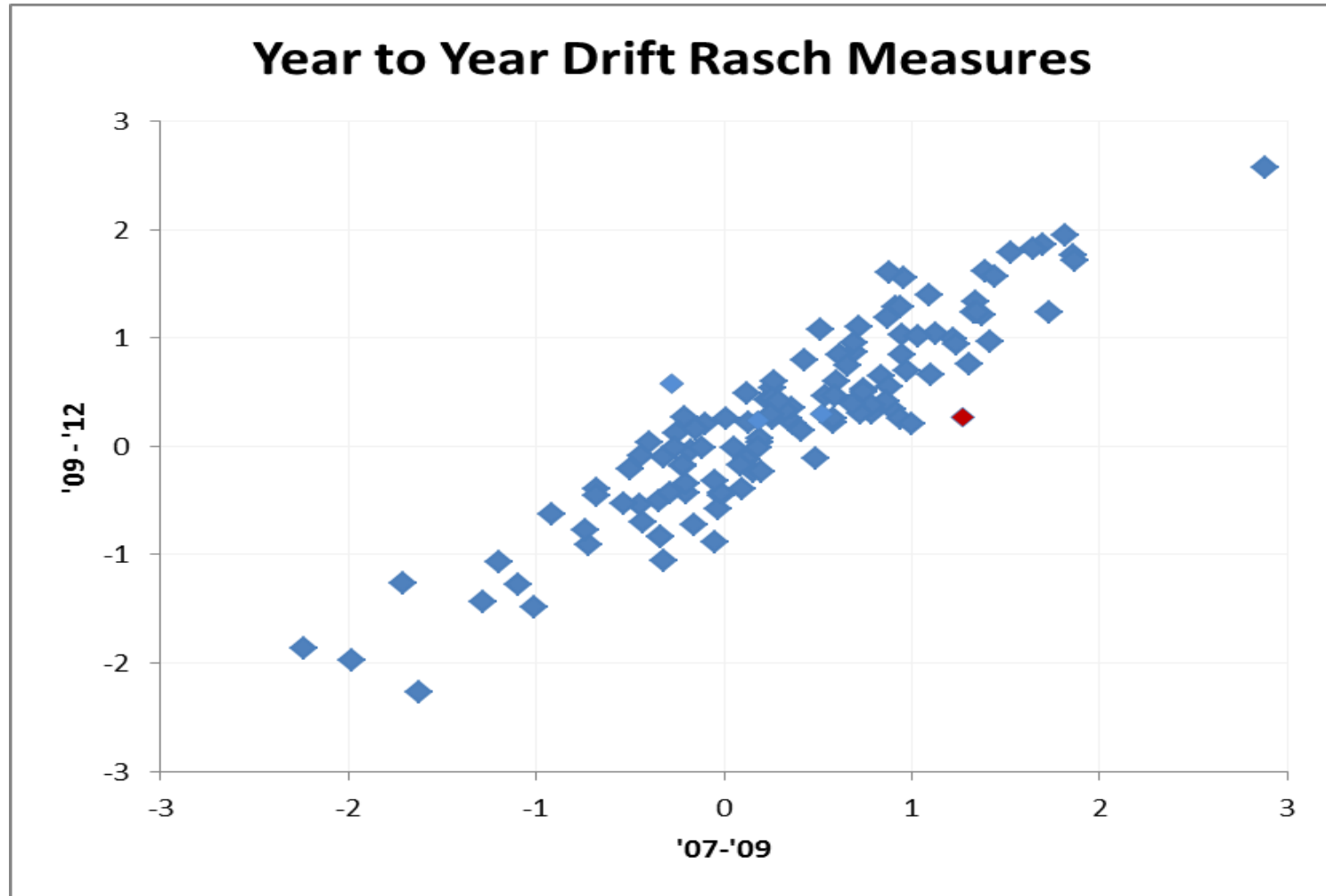
- ▲ Form level analysis for 3 years before and after policy implementation
 - Psychometric characteristics
 - Pass rates
- ▲ Item level drift analysis
 - All pairwise comparisons
 - Most recent use before and after policy implementation

Quantitative Analysis, Phase 1

Results – Form Analysis & Pass Rates

	Form 2007	Form 2008	Form 2009	Form 2010	Form 2011	Form 2012
Theta at cut score	0.78	0.77	1.01*	1.02	1.12	1.09
Livingston-Lewis Decision Consistency	97.2%	97.5%	94.8%	96.8%	96.6%	96.2%
Coefficient alpha	0.90	0.90	0.92	0.92	0.90	0.88
Pass rate	95.6%	96.7%	90.2%	94.9%	94.9%	95.3%

Quantitative Analysis, Phase 1 Results – Item Drift Analysis



Quantitative Analysis–Phase 2

- ▲ Graduates of international (non-accredited dental programs) must successfully complete an accredited Qualifying or Degree Completion Program **OR** the NDEB Equivalency Process prior to being eligible to take the NDEB Written and OSCE Examinations.
- ▲ Population of international test takers who complete this process and take the written examination is notably smaller and less stable in performance.

Quantitative Analysis – Phase 2

Form level Analysis

	2011	2012	2013	2014
Theta Cut Score	1.29	1.26	1.22	1.22
Mean % Correct Score	74.4%	66.5%	66.9%	66.80%
Alpha Reliability	0.97	0.96	0.96	0.96
Pass Rate	43.7%	35.8%	42.0%	48.5%
Decision Consistency (Livingston-Lewis)	92.6%	91.1%	91.0%	91.6%

Quantitative Analysis – Phase 2

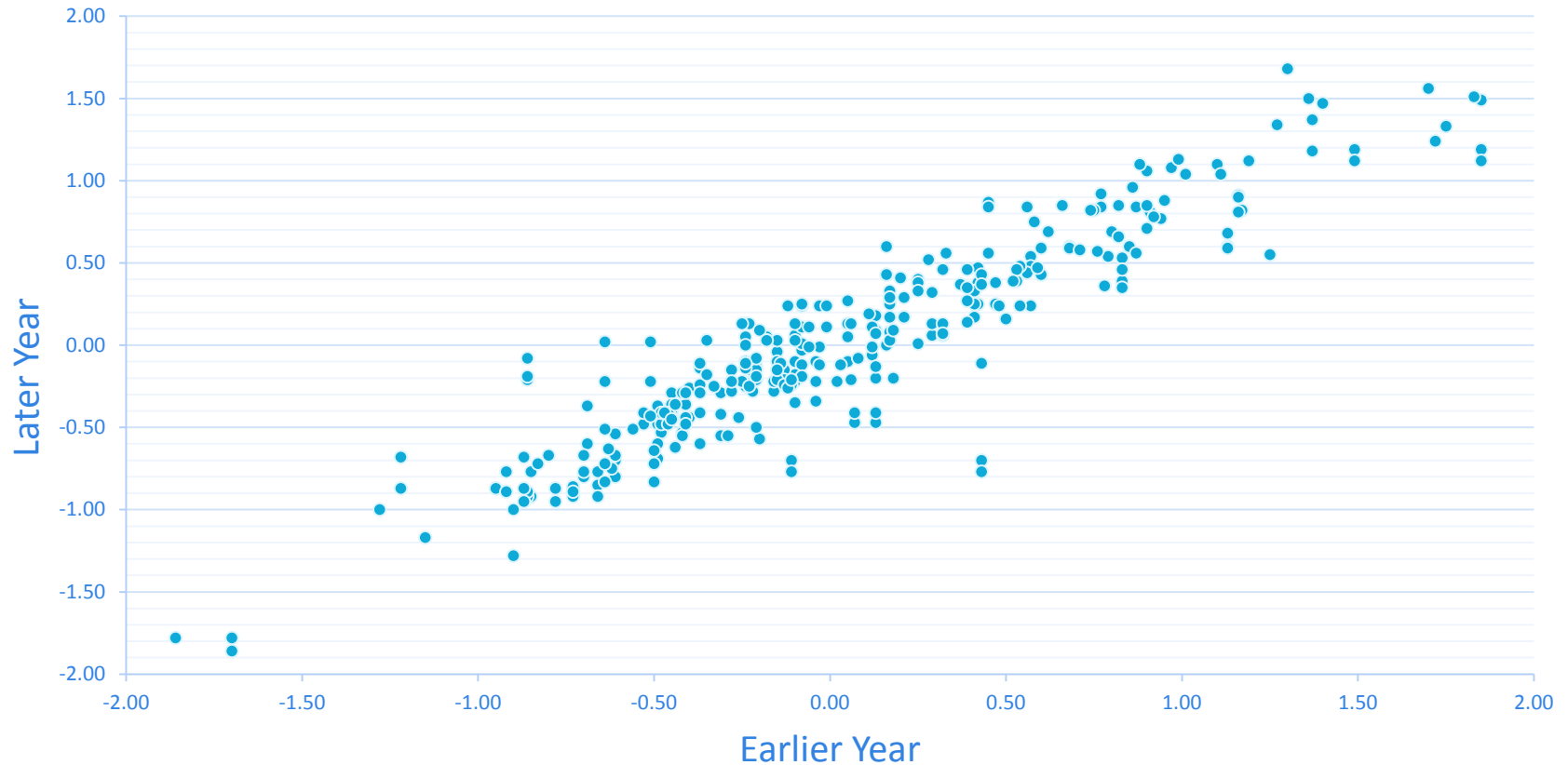
Item level Analysis

- ▲ Differential item functioning (DIF) was completed to investigate shifts in item difficulty
- ▲ 141 items appeared on more than one exam between 2011 and 2014
 - 98 appeared on two exams
 - 8 appeared on three exams
 - 35 appeared on four exams
- ▲ 13 items were found with significant differences in difficulty
 - 9 items identified as easier in later administration

Quantitative Analysis–Phase 2

Item level Analysis

Item Drift for earlier and later test administrations



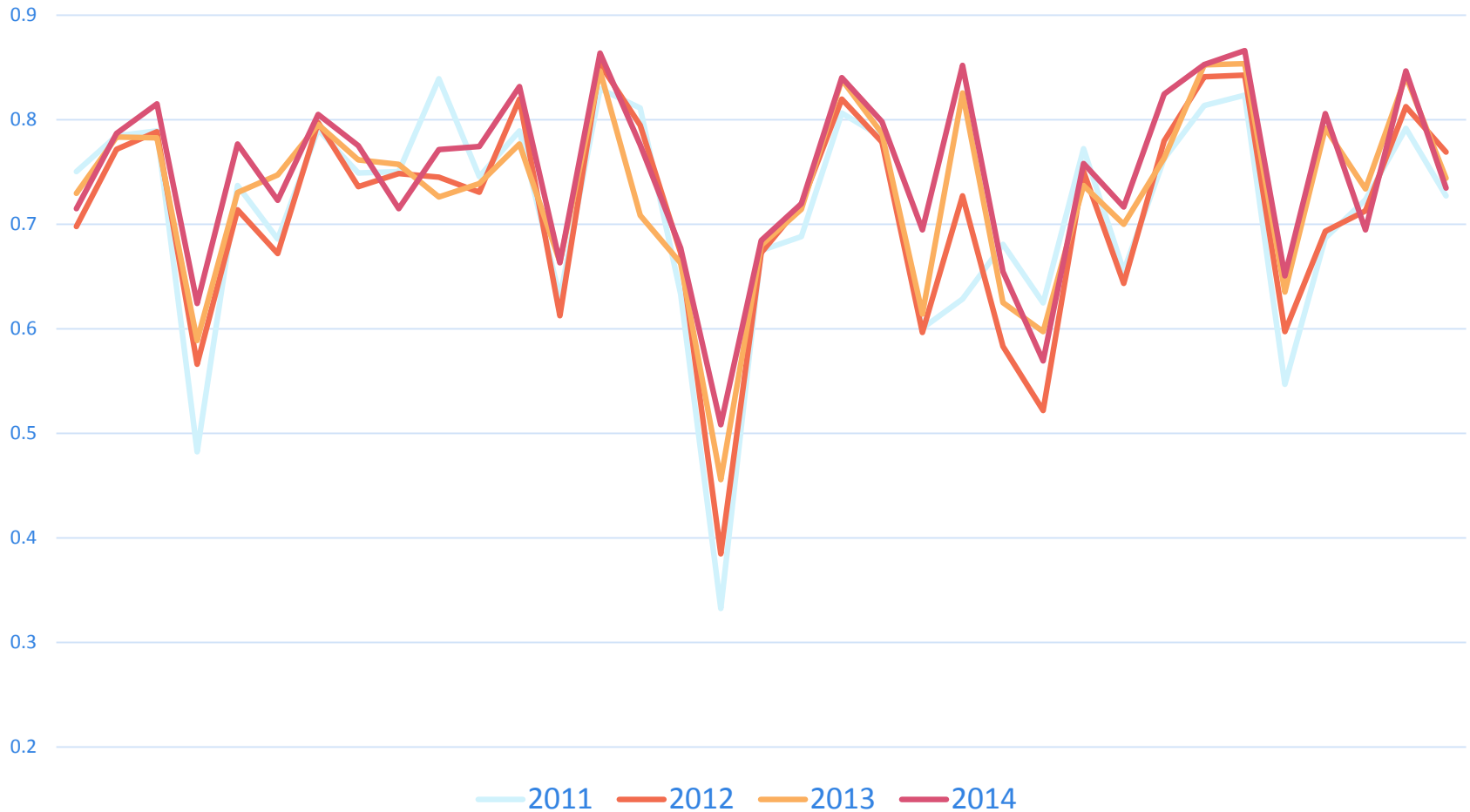
Quantitative Analysis – Phase 2

Items that appeared on all four administrations

- ▲ 35 items appeared on all four test forms
- ▲ Mean difficulty over years showed a slight increase
 - 2011 0.712
 - 2012 0.713
 - 2013 0.731
 - 2014 0.748
- ▲ 27 items demonstrated an increase in p values
- ▲ Five items demonstrated an increase of > 0.10 .

Quantitative Analysis – Phase 2

Items that appeared on all four administrations



Specific Context/Limitations

- ▲ Limitations/Implications for practice
 - Limited administration
 - Large item bank
 - Small sample size

Conclusions

▲ Qualitative

- Limited impact on other system elements
- Positive, intended consequences

▲ Quantitative

- Form level characteristics appeared to shift after the first year, but then stabilized
- Individual item drift was fairly limited with both the Canadian candidate population and the international candidate population
- Most items that appeared on multiple forms did not witness significant shifts in difficulty

Thank you!
Köszönöm!

▲ Please address any questions to:

– Andrew.Wiley@alpinetesting.com